



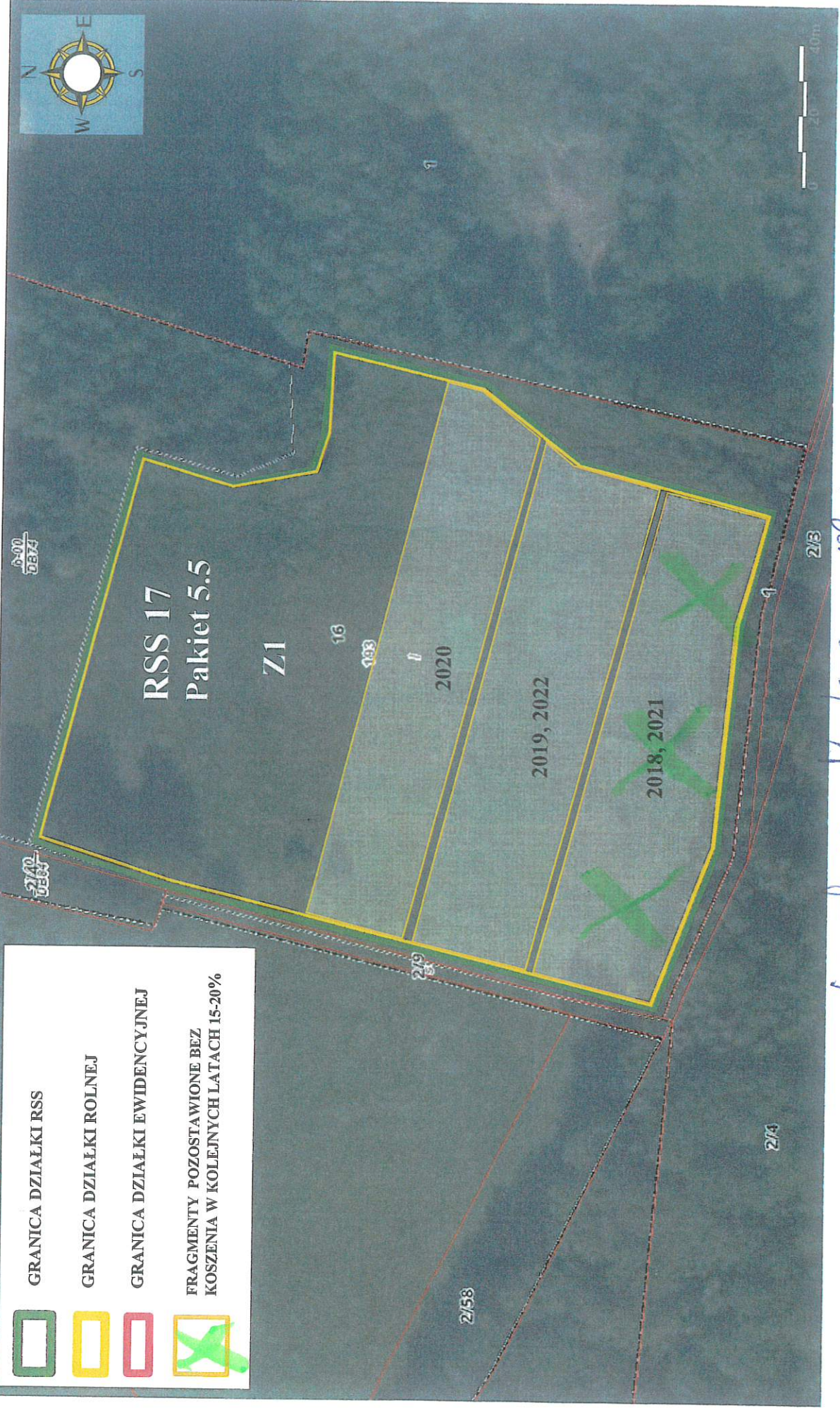


SZKIC DZIAŁKI RSS 17 (źródło <http://www.bdl.lasy.gov.pl/portal/mapy/zmienione>)

|   |   |
|---|---|
|  | GRANICA DZIAŁKI RSS   |
|  | GRANICA DZIAŁKI ROLNEJ  |
|  | GRANICA DZIAŁKI EWIDENCYJNEJ                                  |
|  | FRAGMENTY POZOSTAWIONE BEZ KOSZENIA W KOLEJNYCH LATACH 15-20% |



L - klasa Mokre 105L

2,44 5,3

1000